

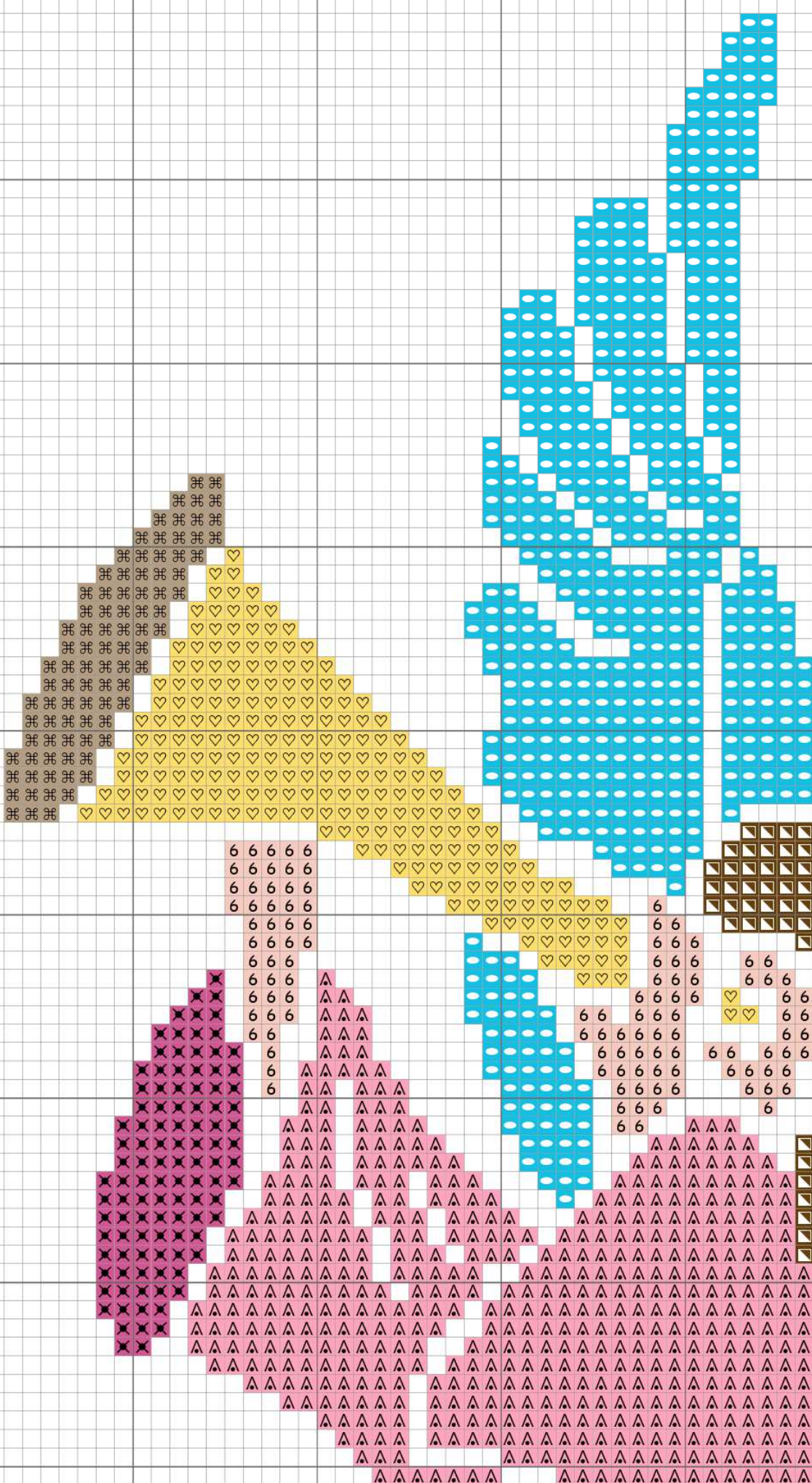
2222. - Archanioł

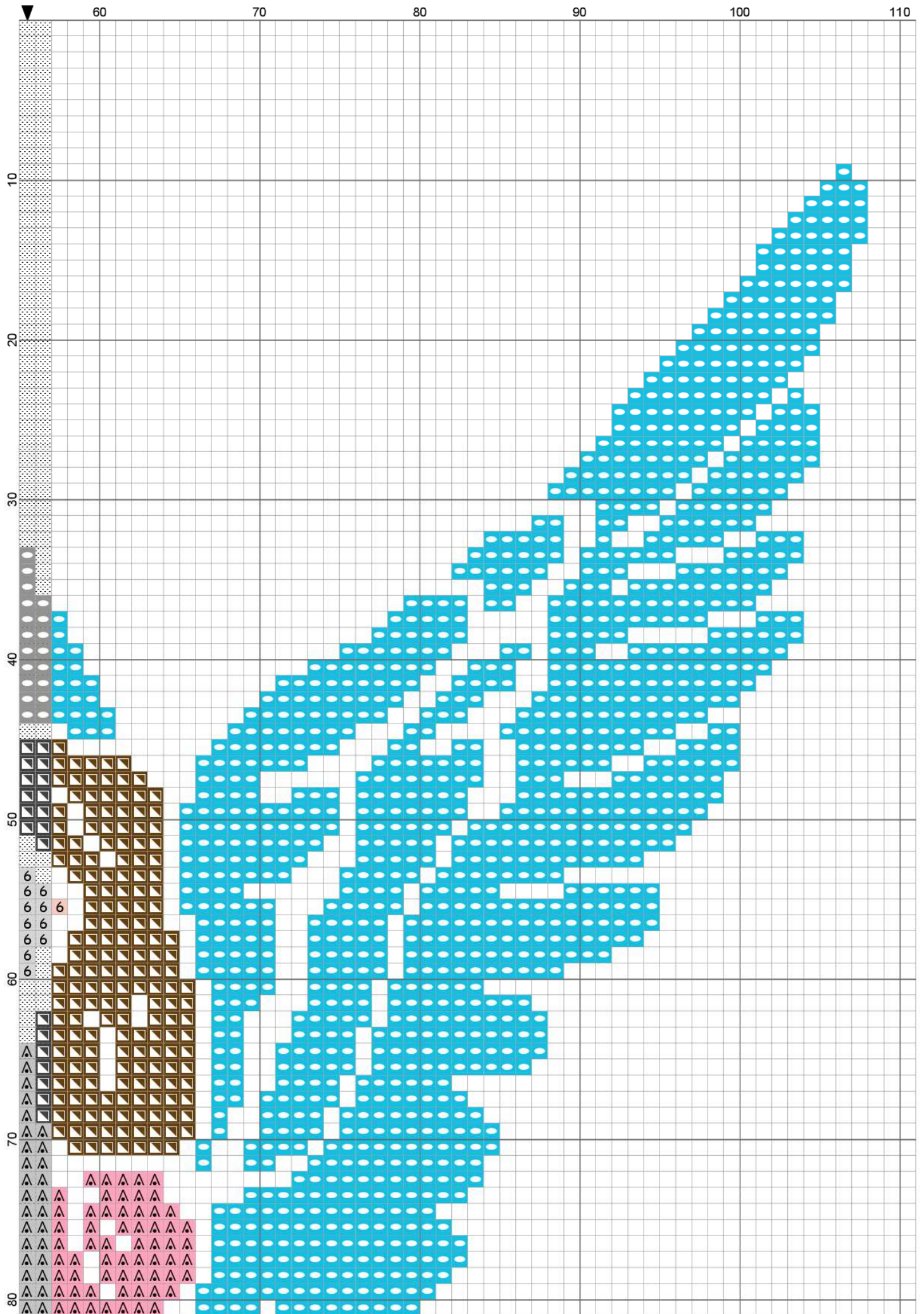
2222. - Archangel

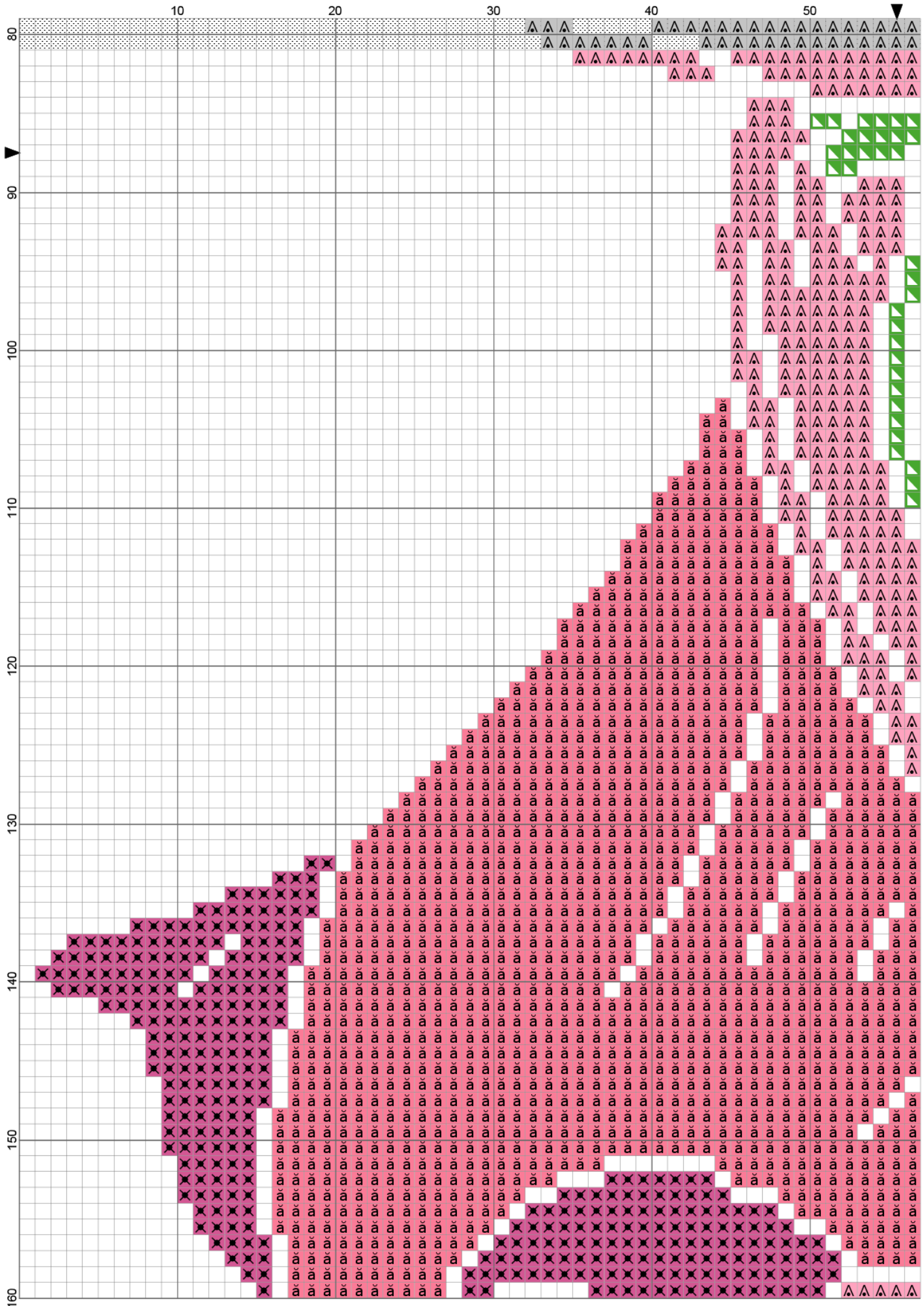


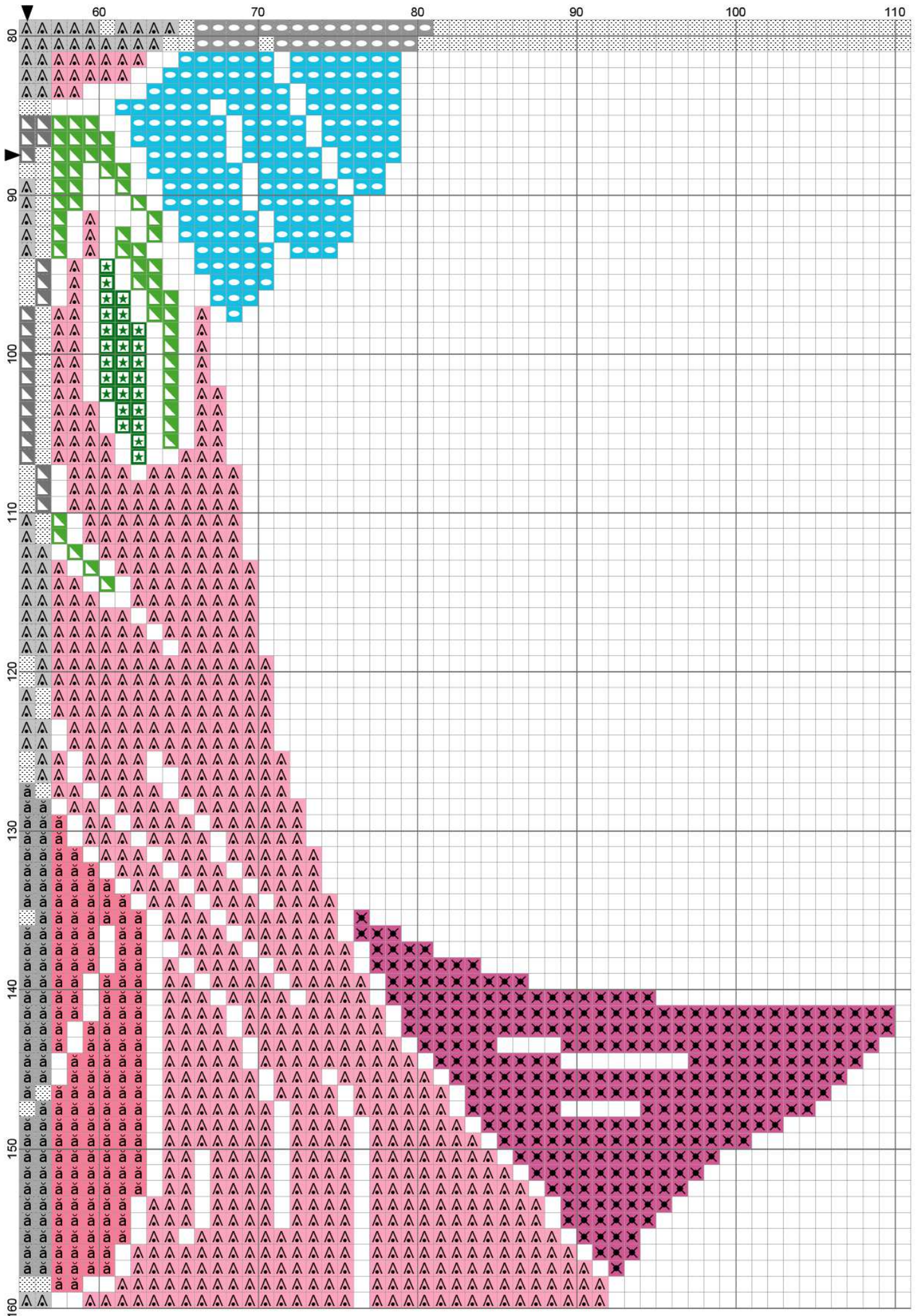
OPIS / DESCRIPTION:

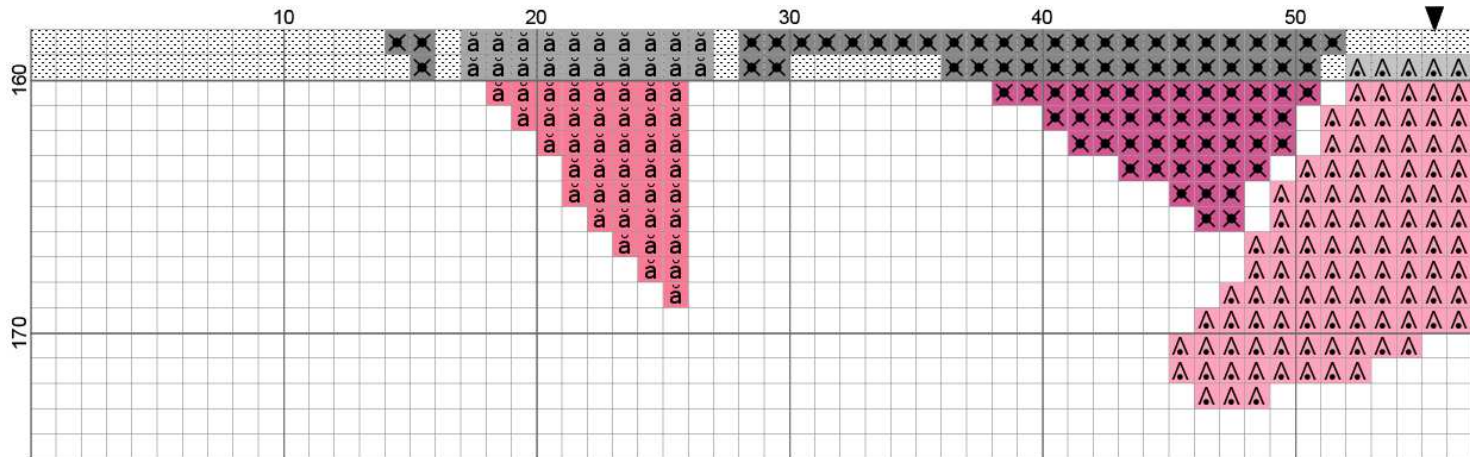
Wymiary dla tkaniny:	Size in cm for fabric:	Aida 14ct:	20,5 x 32,5 cm
		Aida 16ct:	17,5 x 27,5 cm
		Aida 18ct:	16 x 25 cm
Kolor tkaniny	Color of fabric	Biały/ White	
Wymiary w krzyżkach	Size in stitches	111 x 175	
Ilość kolorów	Colors	10	
Wykaz muliny	Embroidery floss	DMC, Ariadna	
Ilość krzyżyków	Quantity of stitches	7 163	
Ilość nitok na ścieg: krzyżykowy	Quantity of threads per: cross stitch	Aida 14ct:	2
		Aida 16ct:	2
		Aida 18ct:	2
Ilość motków muliny razem	Quantity of skeins together	10	

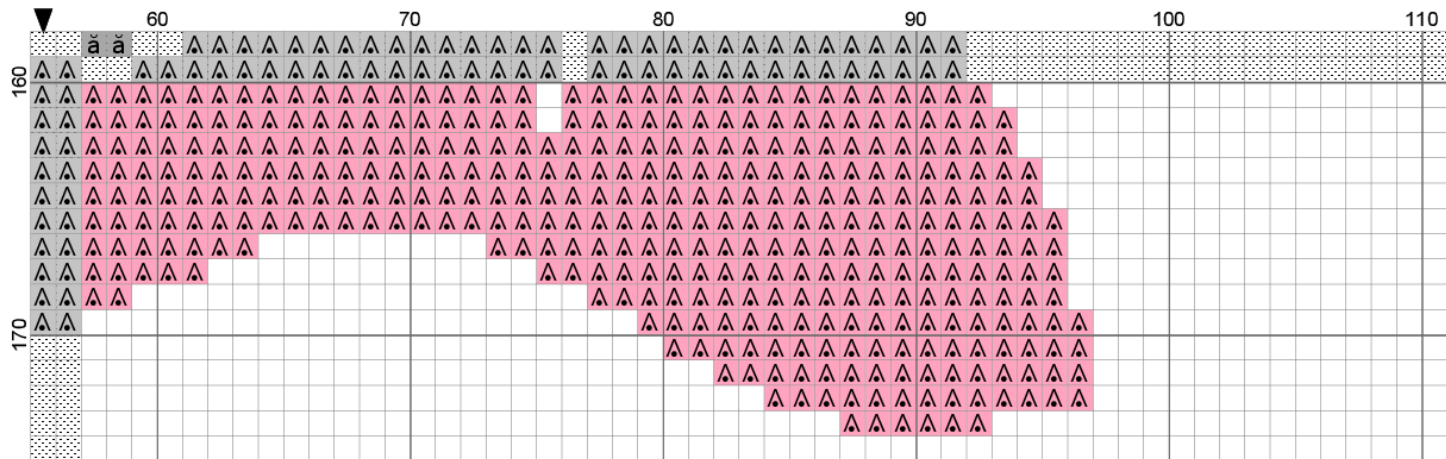






















2222. - Archanioł - Archangel 111x175 (10)				
	DMC	Ariadna	Ilość nitek na ścieg/ Quantity of threads per stitch	Ilość motków muliny/ Embroidery floss quantity
	893	1559	2	1
	957	1550	2	1
	3607	1600	2	1
	996	1619	2	1
	743	1514	2	1
	754	1754	2	1
	801	1773	2	1
	841	1788	2	1
	702	1687	2	1
	700	1678	2	1